

Lorem ipsum dolor sit amet, consectetur adipiscing elit, sed do eiusmod tempor incididunt ut



TEMPLATE CHECKLIST

**projectbyn.**

[projectbyn.com](https://projectbyn.com)

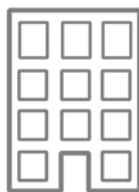


The essential first step to working in Revit is to create a custom template that will be used for all projects.

**A good Revit template  
will economise your time + streamline your workflows.**

Your template should be specifically developed for the needs of your practice and should reflect the graphic style of your architecture studio. A well-developed template helps organise your drawings, sheets and views to navigate the complex Revit browser with greater ease. The template can be fully set up with custom settings, parameters and ready-to-use drafting elements to create beautiful, quality architectural drawings in a consistent graphic style across all projects.

We have outlined the following checklist with they key components to consider when creating a Revit template from scratch.





## TEMPLATE CHECK LIST

---

### Integrated Standards

- BROWSER ORGANISATION : views, sheets + Schedule categories
- PROJECT PARAMETERS : determine necessary parameters for project
- SHARED PARAMETERS : create shared parameters file
- NAMING CONVENTIONS : establish + draft up all naming conventions
- FILES LOCATION : determine all essential file paths
- EXPORT + IMPORT DWG SETTINGS : predefine dwg settings
- PROJECT INFORMATION : complete common project information
- PROJECT UNITS : define the units your projects will use
- KEYBOARD SHORTCUTS : set the commonly used command shortcuts
- SNAPS : adjust the snaps settings

### Graphic Standards

- OBJECT STYLES : define the settings for all object styles
- LINE STYLES : set up a full suite of line styles
- LINES WEIGHTS : define the settings line weights at various scales
- LINE PATTERNS : set up all necessary line patterns
- TEXT STYLES : set up all necessary text styles
- FILL REGIONS : set up a full suite of fill regions
- FILL PATTERNS : set up all necessary fill patterns
- MATERIALS : set up a suite of commonly used materials
- VIEW TEMPLATES : set up a suite of commonly used view templates
- FILTERS : set up the commonly used view filters such as for fire plans
- COLOUR FILL SCHEMES : set up the relevant colour schemes



## TEMPLATE CHECK LIST

---

Preset Elements	LEVELS : set up default levels in elevation views	<input type="checkbox"/>
	PHASES : define the relevant phases e.g. existing, new construction	<input type="checkbox"/>
	SCHEDULES : set up commonly used schedules e.g. windows/doors	<input type="checkbox"/>
	KEYNOTES : add keynote data if this is used by your office	<input type="checkbox"/>
	LEGENDS : set up commonly used schedules e.g. for windows/doors	<input type="checkbox"/>
Families	TITLE BLOCKS : create a suite of titleblocks with parameters	<input type="checkbox"/>
	SYSTEM FAMILIES : include all standard wall, ceiling, roof + floors	<input type="checkbox"/>
Annotation Families	DIMENSIONS : create a suite of linear, angular, radial dimensions	<input type="checkbox"/>
	TAGS : create a suite of graphically elegant tags	<input type="checkbox"/>
	ANNOTATION SYMBOLS : add commonly used annotations	<input type="checkbox"/>
	GRIDS + LEVELS : customize grid + levels to your graphic style	<input type="checkbox"/>
	ARROWHEADS : customize arrow heads to suit your drawing output	<input type="checkbox"/>
	VIEW TAGS : add or customise callout, elevation + section tags	<input type="checkbox"/>



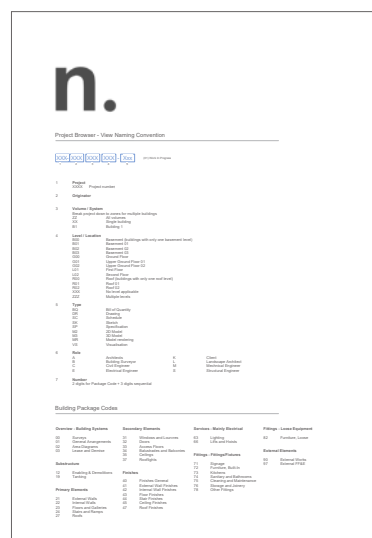
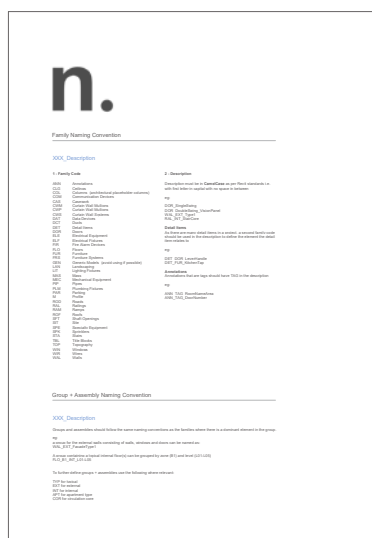
## TEMPLATE CHECK LIST

# Integrated Revit Standards

When working in BIM, organisation is essential.

The fundamental organisational elements to set up in your template include the project information, the file locations to link key files and folders on your server to your Revit project and naming conventions for all project elements. Setting up the project information and file locations in your Revit template will save considerable time in carrying this out for each individual project.

The naming conventions for maintaining an organised Revit model and BIM standards are extensive. These should be outlined and readily available in the Revit template itself for reference. This practice is more likely to ensure the correct conventions are followed. The naming conventions should outline how the following Revit elements should be named and organized: views, sheets, schedules, legends, view templates, materials, families, groups and assemblies. This information can be typed in a drafting view and filed in the browser for easy access when building your project model.







## TEMPLATE CHECK LIST

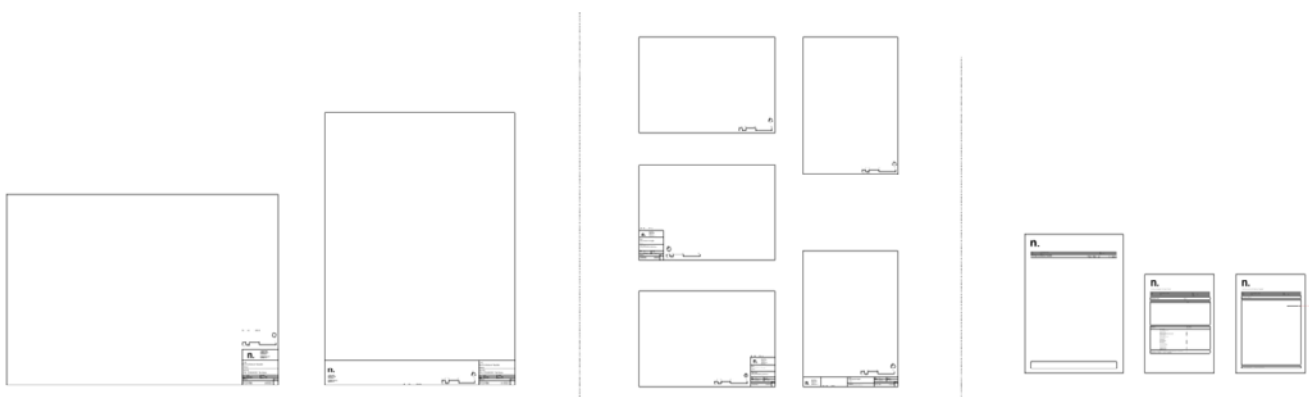
---

### Title Blocks

The template should be populated with your practice's title blocks that reflect your standards and branding. Setting up the following title blocks: A1 landscape, A1 portrait, A3 landscape and A3 portrait in both titled and blank versions is a good place to start.

The title blocks should have a range of integrated parameters that work with the template and project browser to easily categorise each drawing. Integrated parameters such as a scale bar, north sign, revision schedule and information labels can be contained within your title blocks to allow changes to be made to individual sheets quickly and easily from within your project. The naming and numbering format can be set up such that this information can be scheduled and placed on drawing issue sheets and drawing registers. Title blocks for drawing registers and schedules should also form part of your library and be included in the template.

We recommend placing all your standard title blocks on one sheet in your template and filing it with the rest of your standards so that they are easy to see, select and modify where necessary.





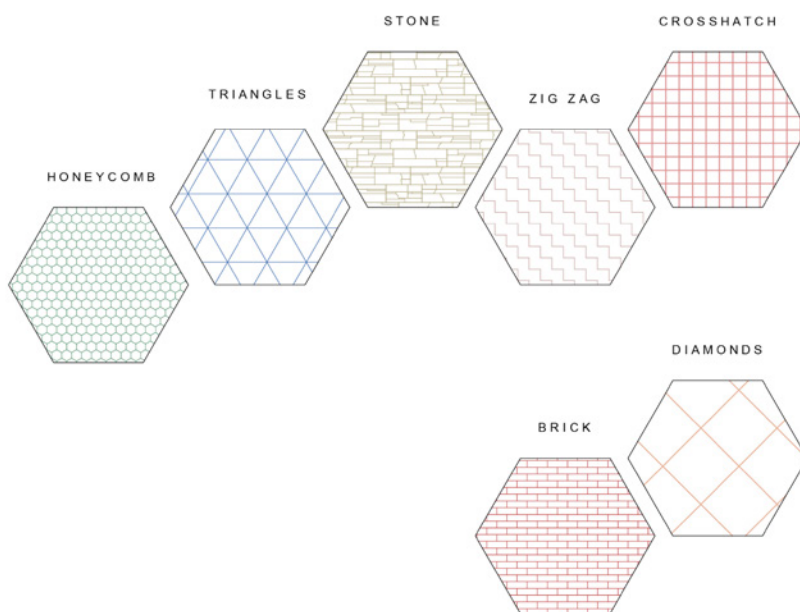
## TEMPLATE CHECK LIST

---

### Graphic Standards

Once the above is all set up, the graphic standards can be added to the template. The first place to start is your lines and filled regions. Revit has a standard set of integrated line styles that cannot be deleted, but you can also add your own. Remember to keep these to a minimum so that there is no repetition or confusion, and follow a strict naming convention so that they can be easily found and their properties easily identified.

Filled regions can be flat colours (opaque or transparent) or hatched. It is a good idea of have a large selection of patterns and a carefully selected colour palette available in your template to enrich your drawings and presentations.







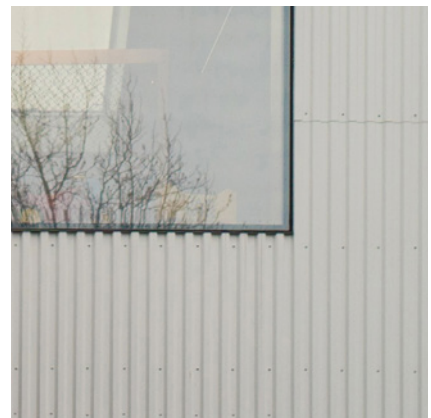
## TEMPLATE CHECK LIST

---

### Materials

Your template should have a standard set of materials that will be used in every project. Having a large number of materials leads to a larger than necessary file size and it's important to keep your template file as lean as possible. Keep this material library to a maximum of 10-15 materials in your template so as not to over load the file size with unnecessary information.

Additional materials can be contained in a separate library file in order not to overload the template file and keep the file size to a minimum.





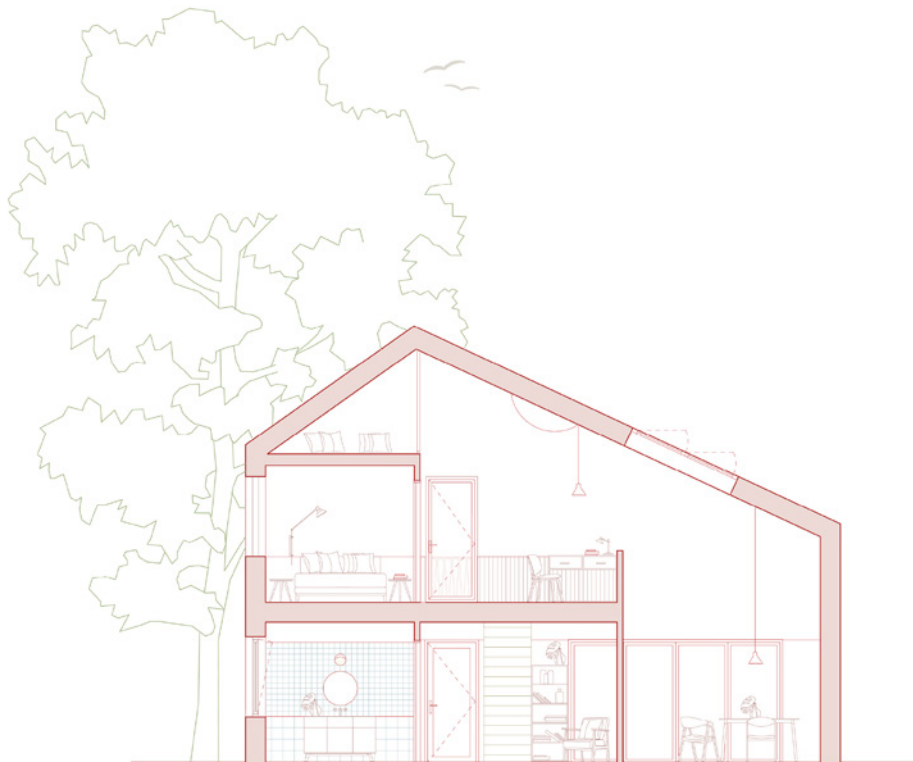
## TEMPLATE CHECK LIST

---

### View Templates

View templates are essential for the control of graphic output from Revit. A series of view templates should be provided for each set of plans, sections, elevations and 3D drawings. Inevitably, view templates will need to be tweaked or updated to suit the individual project but the standard view templates should be available in the template. As always, a strict naming convention must be used to make their purpose clear and avoid duplicates.

Filters are a useful way to override the graphic display and visibility of elements that you select or that share common properties. A suite of filters that are commonly used on projects should be integrated into the template set up.





## TEMPLATE CHECK LIST

---

### Template Tips

#### Watch the file size

Keeping file sizes in Revit to a minimum is a constant challenge as your project progresses. As the first step in the creation of a new Revit model, your template should be kept as lean as possible. Keeping your template to a minimum file size while still packing it with all the essential information is a challenge. As mentioned above, materials and families should be kept to a minimum in the template. In the case of system families, such as walls, floors, ceilings and roofs, only a reduced set of generic build-ups should be contained in the template file. We recommend the use of a separate file that can be used as a content library for all your Revit families and materials.

#### Create a separate content Library file

It is a good idea to keep a content library file that is separate from your template file. Here you can house all the more heavy elements and families without overburdening your template file and therefore your project with superfluous elements and information.

Your content library file can include annotations, materials, families and system families that are not communally used in every project. System families include wall, floor and roof families. A brief descriptor would be useful to include alongside the wall types. The elements in this file can be quickly and easily dragged and dropped into your new project if and when you need it.



## TEMPLATE CHECK LIST

---

### Template Tips

Update your template on a regular basis

Your Revit template should not be a static file, but should evolve over time to include new features and updates based on your projects or practices needs. The template should also be tweaked to reflect changes in the industry as well updates to the Revit software itself as new versions are released.

Visit [projectbyn.com](https://projectbyn.com) for more tips

For further information on Revit graphics and how to develop a Revit template and see our free Revit Template Guide. Our detailed document showcases the key elements and settings to include in your template based on our custom graphic Revit template. It provides detailed descriptions of the functions of our integrated view templates, parametric annotations and graphic elements. It also outlines tips for how to adapt the template to your design practice standards where you may wish.



## ABOUT US

Project by n. is an architectural graphics studio specialising in the design of elegant graphic solutions for architects + design professionals. Our objective is to help architecture practices create beautiful drawings in Revit while achieving efficiencies in the production of drawing information and in the delivery projects from conception through to final realisation.

As architects ourselves, we have experience in working with architecture and design studios that share our passion for producing beautiful graphic drawing output and imagery.

Our full custom graphic revit templates are available to be purchased and downloaded from our website:

[projectbyn.com](https://projectbyn.com)

GET  
IN TOUCH

[hello@projectbyn.com](mailto:hello@projectbyn.com)