

n.



REVIT TEMPLATE GUIDE

**projectbyn.**

[projectbyn.com](https://projectbyn.com)



## TABLE OF CONTENTS

This template guide showcases the key features of our Revit template and sets out the guidelines for its use and implementation into your architecture practice. It provides detailed descriptions of the functions of our integrated view templates, parametric annotations and graphic elements. It also outlines tips for how to modify or further customise the template to your design practice standards.

GRAPHIC ARCHITECTURAL TEMPLATE	1
BROWSER ORGANISATION	2
INTEGRATED REVIT STANDARDS	4
START SCREEN + BIM TRANSMITTAL SHEET	5
GRAPHIC TOOLS	6
FILLED REGIONS	8
TEXT STYLES	11
LINE STYLES	12
TITLE BLOCKS	13
SCHEDULE TITLE BLOCKS	14
ANNOTATIONS	15
VIEW TEMPLATES	18



## REVIT TEMPLATES

---

### GRAPHIC ARCHITECTURE TEMPLATE

Our Revit Architecture Templates are designed to economise your time, money and efforts in setting up Revit graphics and to streamline the process of implementing Revit into your design practice. Our templates will equip you with the tools to get a head start in mastering Revit and to immediately start creating graphically elegant drawing output, even as a beginner.



Our templates have been specifically developed for design-led architecture studios with a focus on crafted design output. They are designed to help organise your drawings, sheets and views to navigate the complex Revit browser with greater ease. Our templates are fully set up with custom settings, parameters and ready-to-use drafting elements to create beautiful, quality architectural drawings and to save considerable time in getting you, your team or architecture studio started in Revit.

We offer both a LITE and PRO Edition of our template. The LITE Edition is ideal for freelance architects, sole practitioners, students and beginners. Our PRO Edition has been developed for architecture practices and has built-in features and tools for managing small to large scale projects from conception through to final completion. Our templates can be quickly and easily modified, updated or tweaked to add any graphic elements specific to your architecture studio and standards.

Working with Imperial Units? —————



No problem. We provide an Imperial Unit version with each of our Revit Templates products.



## TEMPLATE FEATURES

---



### LITE

Revit Template

- ✓ Custom Object Styles
- ✓ Custom Line Styles
- ✓ Custom Text Styles
- ✓ Custom Filled Regions
- ✓ Naming Conventions
- ✓ Custom Shared Parameters
- ✓ Basic View Templates
- ✓ Basic Annotation Library
- ✓ Basic Title Block Suite
- ✗ Advanced View Templates
- ✗ Advanced Annotation Library
- ✗ Advanced Title Block Suite
- ✗ Advanced Filled Regions
- ✗ Drawing Schedule



### PRO

Revit Template

- ✓ Custom Object Styles
- ✓ Custom Line Styles
- ✓ Custom Text Styles
- ✓ Custom Filled Regions
- ✓ Naming Conventions
- ✓ Custom Shared Parameters
- ✓ Basic View Templates
- ✓ Basic Annotation Library
- ✓ Basic Title Block Suite
- ✓ Advanced View Templates
- ✓ Advanced Annotation Library
- ✓ Advanced Title Block Suite
- ✓ Advanced Filled Regions
- ✓ Drawing Schedule





## TEMPLATE APPLICATIONS

---



### LITE

Revit Template



### PRO

Revit Template



Domestic House Projects



Domestic House Projects



Concept + Student Projects



Interior Design Projects



Interior Design Projects



Small Scale Commercial Buildings



Multi-Unit Residential Buildings



Master Plan Projects



Large Scale Commercial Buildings

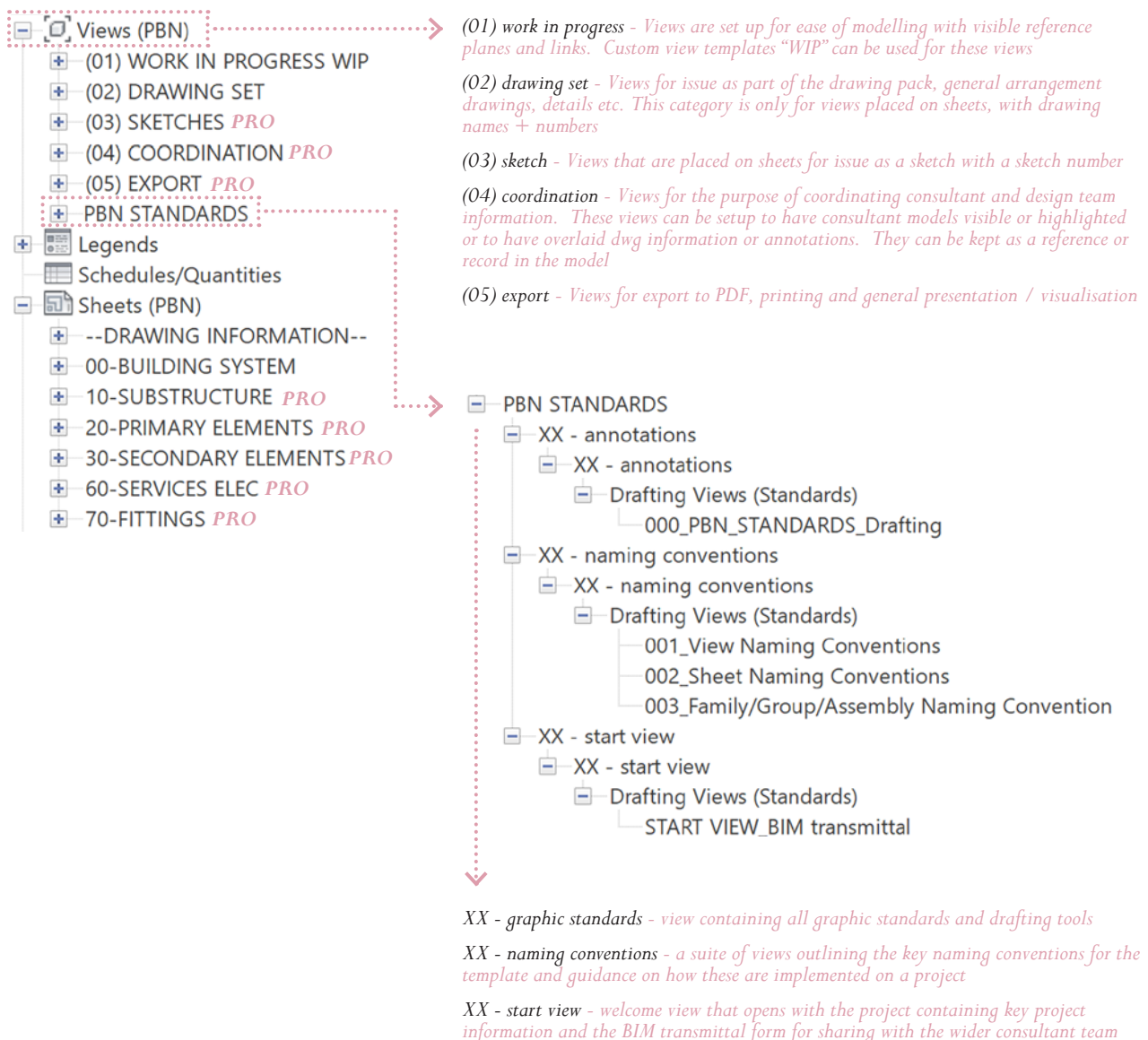


## TEMPLATE GUIDE

### BROWSER ORGANISATION - VIEWS

We have carefully constructed the template browser to optimize the efficiency of your workflows while adhering to industry standards for working in Revit. It is designed to be simple and organised in order to help you easily navigate through the many sheets, views, schedules and legends of your project file.

A rigorous organisation of the browser is essential to implement from the beginning of a project, to enable your Revit file to grow and evolve from concept through to construction in a structured, organised and efficient manner. The “Views (PBN)” category contains all plans, sections, elevations, drafting and 3D views arranged and categorised for easy navigation.





## TEMPLATE GUIDE

### BROWSER ORGANISATION - SHEETS

The “Sheets (PBN)” section of the template browser contains a rigorously categorised organisational structure for the sheets containing the drawings, drawing information, sketches, exports and schedules.

Our PRO Edition has an expanded set of categories to further organise drawings on more complex projects. A set of placeholder sheets have been set up, classified and organised based on the drawing package codes to which they relate. Using the integrated categorisation parameters that we have built into the browser, the sheets can be added to and organised with ease and according to a set of standards.

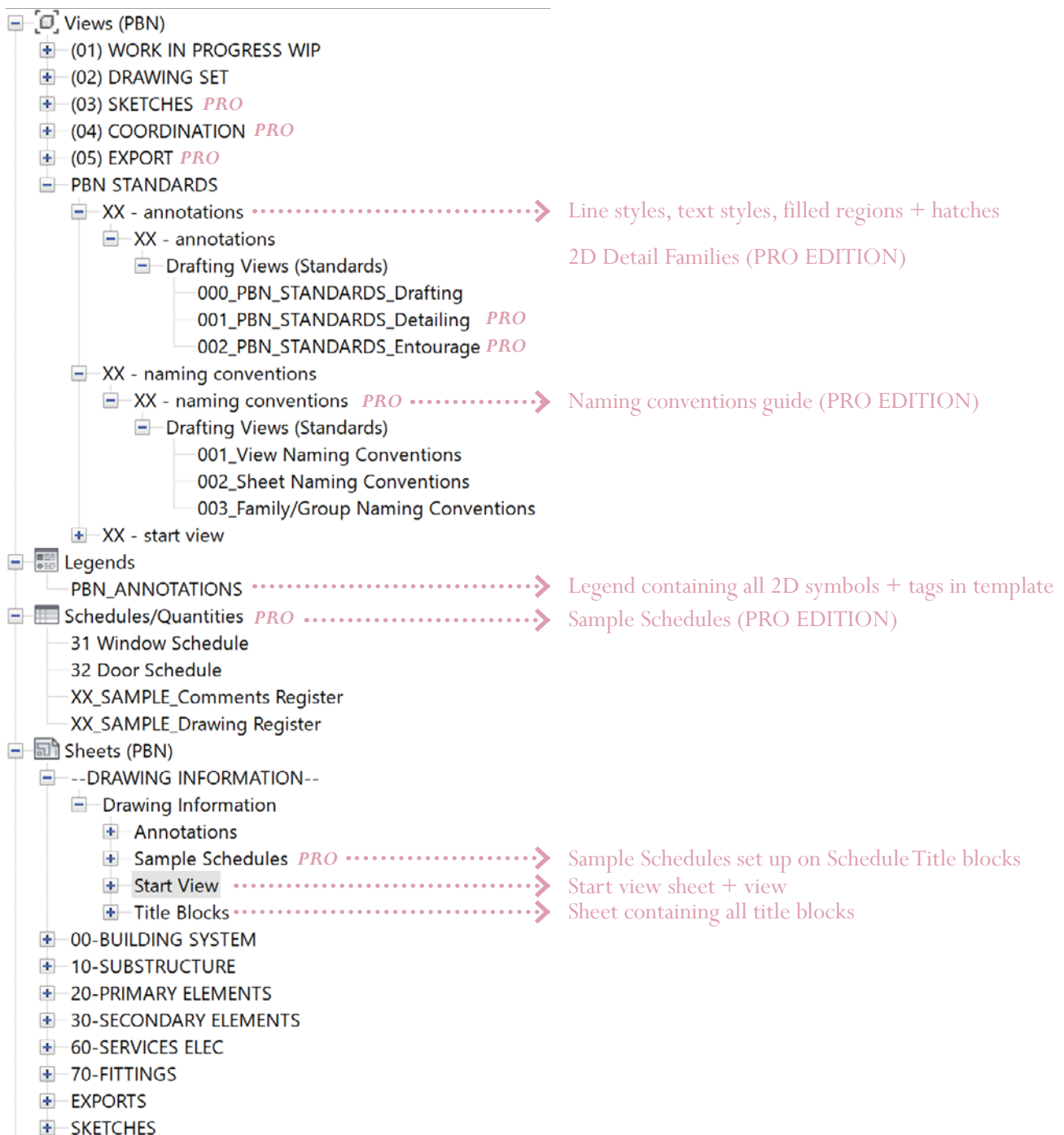




## TEMPLATE GUIDE

### HOW TO NAVIGATE THE TEMPLATE

The screen shot below from the Revit PRO Template shows the locations of the various standards, 2D families, tags, title blocks, sample schedules and naming conventions guide in the template.





The template includes a specially developed start screen that also functions as a BIM transmittal sheet. This is the default view that first appears when the project file is opened. It operates as a record of the key project information, such as the name, project base point, file format and template version.

Included in the start view is a transmittal sheet which acts as a record of when and for what purpose the model was issued. This is an important means of recording the transmittals of models both internally and for the wider consultant design team. The logo image can be replaced to adopt your practice logo and a project specific image can be added for easy identification of the individual project upon opening.

7



## TEMPLATE GUIDE

### INTEGRATED REVIT STANDARDS *PRO EDITION ONLY*

A Revit project is a complex platform that both produces and stores vast volumes of building information in a single file. In order to efficiently navigate this platform, and organise and produce coherent output, all elements must be carefully named, categorised and classified using a standardised system.

Our template outlines in a clear and concise manner how Revit elements should be named and organised. This information is contained in the template for easily access and reference when building your project model. The sheets shown below are screen shots from the template browser of the template. They outline the naming conventions for families, groups assemblies, views, sheets schedules and legends.

The diagram illustrates the navigation path from the template browser to specific naming convention sheets. On the left, a tree view under 'PBN STANDARDS' shows the following structure:

- XX - annotations
- XX - annotations
- XX - naming conventions (highlighted with a red dashed box and labeled 'PRO FEATURE')
- XX - naming conventions
  - Drafting Views (Standards)
    - 001\_View Naming (linked to the top sheet)
    - 002\_Sheet Naming
    - 003\_Family/Group Naming (linked to the bottom sheet)

On the right, two screenshots of the template browser are shown:

- The top sheet is titled 'n.' and 'Project Browser - Sheet Naming Convention'. It contains a table of naming conventions for sheets, including columns for 'Sheet Number', 'Sheet Name', 'Sheet Description', and 'Sheet Type'.
- The bottom sheet is titled 'n.' and 'Family Naming Convention'. It contains a table of naming conventions for families, including columns for 'Family Name', 'Family Description', and 'Family Type'.

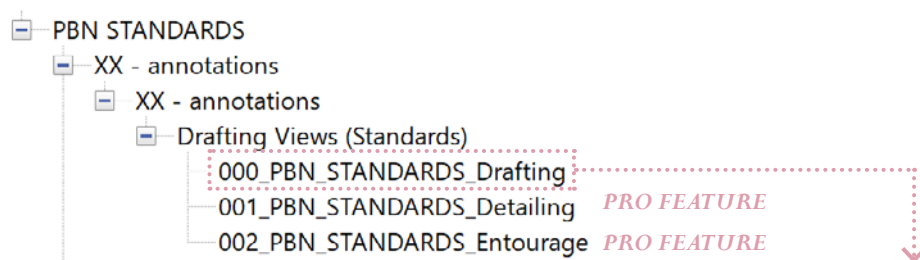




## TEMPLATE GUIDE

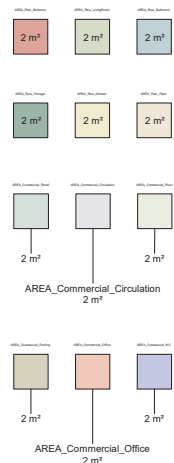
### GRAPHIC TOOLS *PRO EDITION ONLY*

Our Pro Edition Template has an advanced suite of text styles and filled regions including Area Regions that can be tagged with their area and description. These are particularly useful when subdividing rooms into specific areas on a view by view basis and also for quickly calculating and highlighting areas on conceptual or scoping drawings.



#### FILLED REGIONS - AREAS

##### AREA REGIONS - TAGS



##### RESIDENTIAL AREAS - ZONING

##### COMMERCIAL AREAS - ZONING

#### FILLED REGIONS - COLOUR PALETTE

##### COLOUR PALETTE - OPAQUE

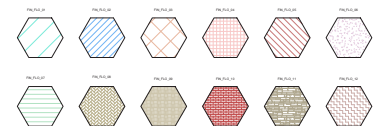


##### PRIMARY PALETTE

##### COLOUR PALETTE - TRANSPARENT



##### PRIMARY PALETTE



##### Smart Text - leaderlines



##### Smart Text - standard



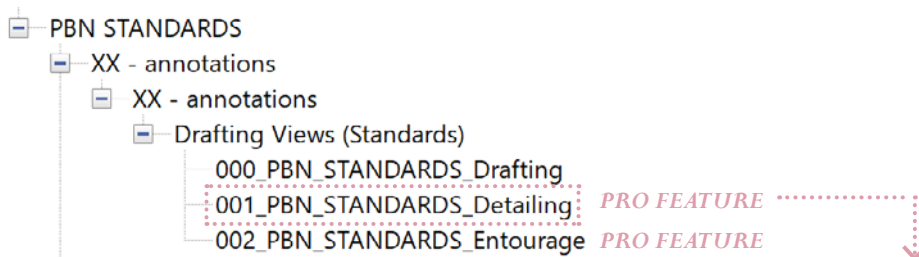




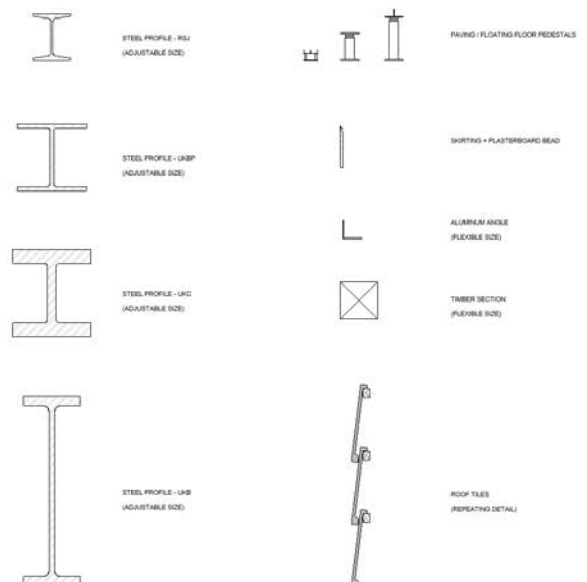
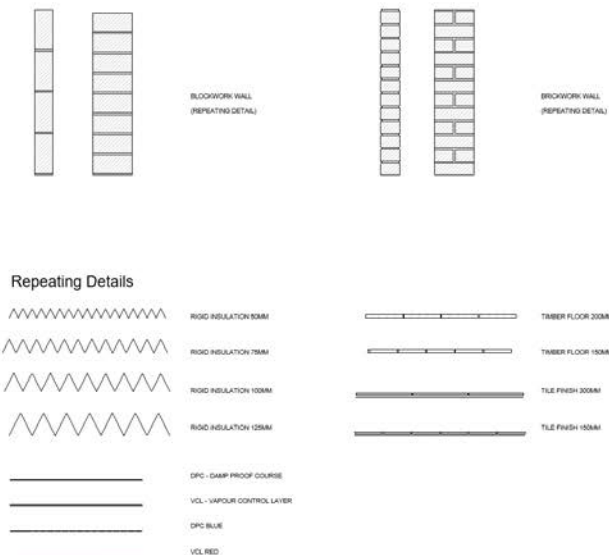
## TEMPLATE GUIDE

### CUSTOM DETAIL FAMILIES *PRO EDITION ONLY*

We have developed a suite of custom detail items and repeating details to enhance your 2D Revit detail drawings and to save considerable time in drafting typical building details. These detail 2D families are available in the PRO template only and include, insulation lines, brick / block work coursing, DPC / VCL layers, floor and roof finishes and structural profiles.



#### DETAIL DRAFTING - COMPONENTS Standard Components





## TEMPLATE GUIDE

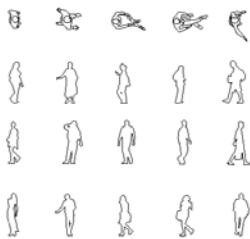
### CUSTOM DETAIL FAMILIES *PRO EDITION*

In our PRO Template have included a set of 2D detail items to populate your 2D drawings, including people, trees, and vehicles in plan and elevation, as well as a suite of parking symbols.



#### DETAIL ITEMS - ENTOURAGE

##### PEOPLE



##### LANDSCAPE



##### VEHICLES





## TEMPLATE GUIDE

### FILLED REGIONS - SOLID

# 1.

Our library of hatches and filled regions will give you more graphic control over your drawings to enable you to produce the best quality output from Revit. You can choose between 24 custom created solid filled regions in both opaque and transparent format. The colours have been carefully selected to be overlaid on plan, section, elevation and detail drawings and to work in harmony with one another for the graphic enhancement of architectural drawings, presentations and visualisations.





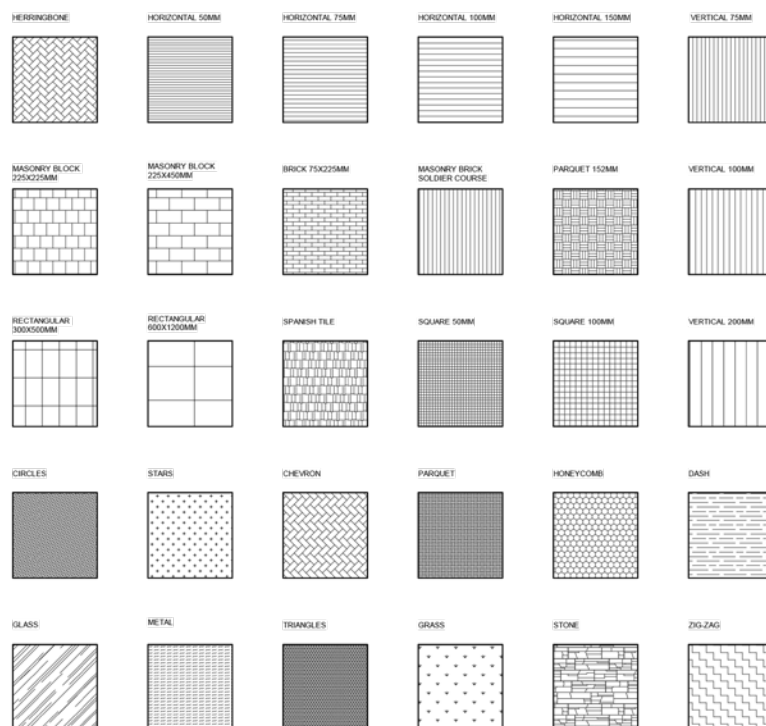
## TEMPLATE GUIDE

### FILLED REGIONS - MODEL

## 2.

We have created a suite of model filled regions that can be used as surface patterns on 3D elements in the Revit model, as well as for 2D drafting and detailing. Each pattern has been specially developed to enhance the architectural graphics of your drawings and 3D views.

Model patterns represent the surface appearance of a 3D model element, such as brick coursing or ceramic tile on a wall. The scale of these patterns are fixed to the model and therefore will adapt to the scale of the 3D elements to which they are applied and according to the view scale settings.



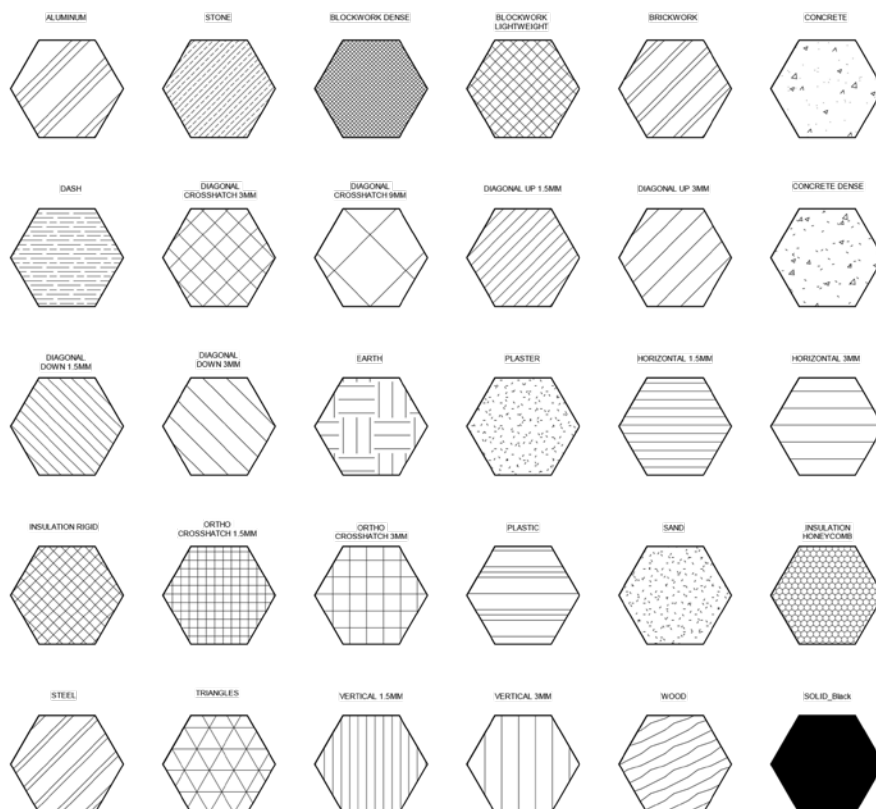


## TEMPLATE GUIDE

### FILLED REGIONS - DRAFTING

## 3.

In addition to our model filled regions, we have developed a custom suite of drafting patterns for use in drafting views and detail drawings. These patterns represent materials in symbolic form and can be typically used to represent the cut surfaces of elements.





## TEMPLATE GUIDE

### TEXT STYLES

As architects we know the importance of having a range of text styles and sizes for annotating architectural drawings of varying types and scales. Our custom text styles therefore come in a large selection of sizes, colours and transparencies to suit a wide range of applications. Each text style follows a standard naming convention such that they are neatly organised in the template and that their appearance, size and colour easily identifiable.

● ————— ARIAL_O_1.5mm	ARIAL_O_1.5mm
● ————— ARIAL_T_1.0mm	ARIAL_T_1.0mm
● ————— ARIAL_O_1.0mm_red	ARIAL_O_1.0mm_red
● ————— ARIAL_O_1.5mm	ARIAL_O_1.5mm
● ————— ARIAL_T_1.5mm	ARIAL_T_1.5mm
● ————— ARIAL_T_1.5mm_red	ARIAL_T_1.5mm_red
● ————— ARIAL_O_2.0mm	ARIAL_O_2.0mm
● ————— ARIAL_T_2.0mm	ARIAL_T_2.0mm
● ————— ARIAL_T_2.0mm_red	ARIAL_T_2.0mm_red
————— ARIAL_T_2.0mm_border	ARIAL_T_2.0mm_border
● ————— ARIAL_T_2.0mm	ARIAL_T_2.0mm
● ————— ARIAL_T_2.0mm_red	ARIAL_T_2.0mm_red
● ————— ARIAL_T_2.0mm_border	ARIAL_T_2.0mm_border
● ————— ARIAL_O_2.5mm_Blue	ARIAL_O_2.5mm_Blue
● ————— ARIAL_T_3.0mm	ARIAL_T_3.0mm
● ————— ARIAL_O_3.0mm	ARIAL_O_3.0mm
● ————— ARIAL_O_3.0mm_red	ARIAL_O_3.0mm_red
● ————— ARIAL_O_3.0mm_Blue	ARIAL_O_3.0mm_Blue
● ————— ARIAL_T_4.0mm	ARIAL_T_4.0mm
● ————— ARIAL_O_4.0mm	ARIAL_O_4.0mm
● ————— ARIAL_O_4.0mm_red	ARIAL_O_4.0mm_red

### SMART TEXT *PRO EDITION ONLY*

Our Revit Template Pro Edition has the extra features of smart text families. The Comments Text Style can be used throughout the project for commenting on drawings and has the added feature being scheduled such that these comments can be easily accessed, recorded and managed. Our Weblink Text Style provides useful URL links or links to information on your server. Our Pro Edition Start Screen has been populated with a list of these Weblinks providing quick access to key online information which can be expanded as our practice requires.

◀ ————— ① Enter Your Comment Here	① Enter Your Comment Here
● ————— ① Weblink Description	① Weblink Description



## TEMPLATE GUIDE

### LINE STYLES

Clean and considered line styles and line weights are key to achieving beautiful drawings. Through many trials and tests, we have curated a set of essential line styles for inclusion in our template with the objective of enhancing the graphical output from Revit. We have updated the default Revit line weights table in the template to ensure both PDF and hard copy printed drawings are elegantly presented.

#### PBN standard lines

-----	01 - Dotted
— — — — —	01 - Hidden
— — — — —	01 - Hidden_Red
-----	01 - Hidden_Tight
-----	01 - Hidden_Tight_Grey
—————	01 - Solid
—————	01 - Solid_Grey
—————	01 - Solid_Grey_Light
—————	02 - Solid
—————	03 - Solid
—————	05 - Solid
—————	06 - Solid
—————	07 - Solid
— — — — —	08 - DashDot
—————	08 - Solid
—————	09 - Solid
— — — — —	10 - DashDot_Red
—————	10 - Solid
—————	10 - Solid_Blue
— — — — —	10 - Hidden_Blue
—————	10 - Solid_Green
— — — — —	10 - Hidden_Green
—————	10 - Solid_Grey
-----	10 - Hidden_Red
—————	10 - Solid_Red_Hidden
—————	12 - Solid
—————	12 - Solid_Red

#### REVIT default lines

—————	<Beyond>
— — — — —	<Centerline>
-----	<Demolished>
— — — — —	<Hidden>
-----	<Overhead>
—————	THIN LINES
—————	LINES
—————	MEDIUM LINES
—————	WIDE LINES
— — — — —	HIDDEN LINES



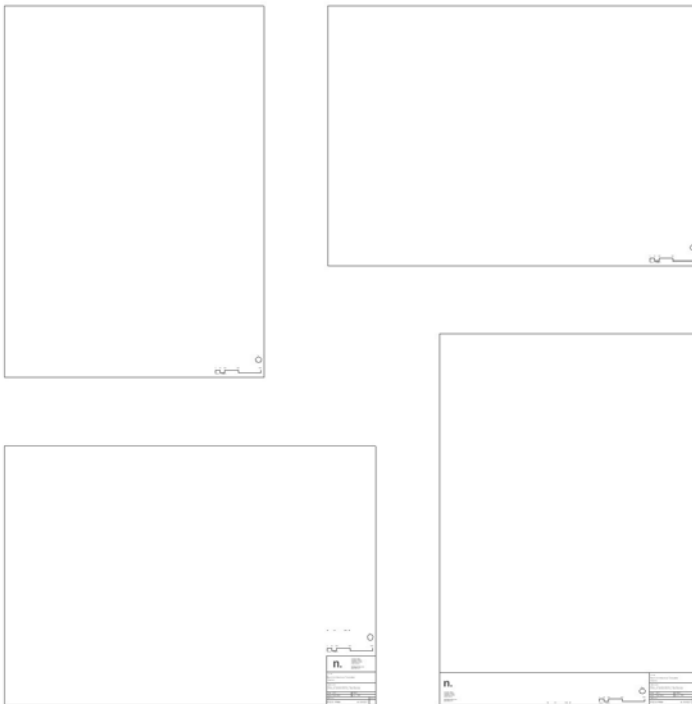
## TEMPLATE GUIDE

---

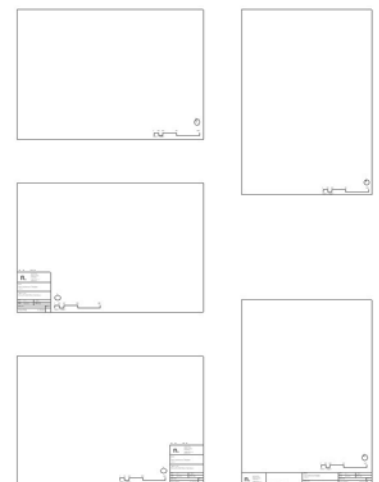
### TITLE BLOCKS

Our template title blocks come in A1 landscape, A1 portrait, A3 landscape and A3 portrait in both title block and blank versions. They are easy to customise to suit your practice standards and branding. They have a range of integrated parameters that work with the template and project browser to easily categorise each drawing.

We have carefully set up the title block families with the required tools and features to automate the management of your drawing information. Our title blocks automatically populate with the required project information such as the name and address of your project, the client name, the project number etc. This project data is drawn directly from the Project Information. The sheet information, such as the name, number date scale etc is managed via the parameters in the sheet properties panel. The integrated parametric scale bar, north sign, revision schedules and information labels allow changes to be made to individual sheets simply and swiftly from within your project.



A1  
title blocks



A3  
title blocks





## TEMPLATE GUIDE

### TITLE BLOCK TOOLS

#### Revision Schedule

The revision schedule includes the revision number, date and description. The appearance of the revision schedule has been modified to sit neatly within the title block and to ensure there is enough space for the revision schedule to expand as new revisions are added to the schedule.

#### Revision Number

A revision number that is clearly displayed on the title block and has been set up as a 'label' such that it pulls its data from the project and sheet information and is populated automatically.

#### Scale

The scale value for each sheet is set up to automatically populate the title block. As A1 sheets are often scaled down to A3 sheets when printed, a new parameter 'Scale @ A3' was added to also indicate the scale at A3. The scale at A3 value can be entered from the Properties Panel.

#### Scale Bar

The scale bar is a nested family in the title block designed to be used for multiple scales. The scale values can be easily entered from the sheet property panel to quickly modify the scale bar on individual sheets. The scale bar visibility can also be turned on and off from the Properties Panel.

#### North Sign

The north sign has been designed with parameters that allow its angle can be managed directly from the project by entering in values in the sheet properties panel.

#### Watermarks

Watermarks 'DRAFT' or 'SKETCH' are a custom feature to the title block family. This feature will allow for consistency across drawings as well as an automated way of adding these notes.

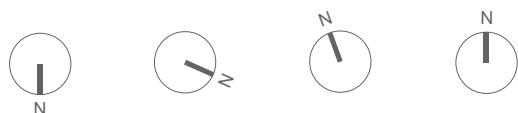
A rev.	00.00.0000 date	Revision 1 amendment
		
		
SCALE: 1:100 @ A1		
<div><div><b>n.</b></div><div>Company Name Company Address Telephone Contact Email Address hello@projectbyn.com projectbyn.com</div></div>		
job title Revit Architecture Template Project by n.		
drawing title GROUND FLOOR PLAN		
scale	1 : 100 @ A1	1:50@A3
status	Project Status	job no. P000
drawing no.	P000-PBN-XX-G00-DR-A-01110	revision A

#### Parametric Features:

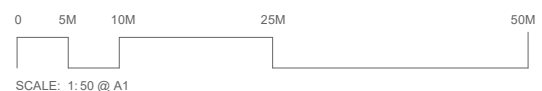
##### Revision Schedule

/	00.00.00	description
rev	date	amendment

##### Auto-rotate North Arrow



##### Parametric Scale Bar





## TEMPLATE GUIDE

### SCHEDULE TITLE BLOCKS *PRO EDITION ONLY*

Our Pro Edition Template includes a suite of Schedule Title Blocks in addition to the standard suite of A1 and A3 title blocks. These include a title block designed for window and door schedules, a drawing issue sheet and a comments register for use in scheduling and recording comments using the comments smart text style.

#### DOOR / WINDOW SCHEDULES

#### DRAWING REGISTER

#### COMMENTS REGISTER

A3/A4  
schedules



How you populate the revisions section of the schedule, will depend on how you wish to display your drawing revisions, and you can modify the register accordingly. If you wish to show a full history of the drawing revisions issued and their date, the values can be entered directly using simple text overlaid onto the schedule. If only the latest revision number of the drawing is required to be shown, then simply add this field ('current revision') to the schedule and this will be automatically populated.

### Drawing Register & Issue Sheet

- Distribution List uses simple text to record to whom drawings have been issued.



## TEMPLATE GUIDE

### SAMPLE COMMENTS REGISTER *PRO EDITION ONLY*

The comments register is a useful team coordination tool that we have included in the PRO Template. The register is composed of a specifically developed comments tag that is linked to a Comments Register. The tag is available in view: PBN Annotations > 000\_PBN\_STANDARDS\_Drafting.

The comments tag records comments across drawings and instantly lists them on a register. We have included parameters such as initials of the team member who created the comment, date the comment was created and status of the comment. The comments register can be used as a management tool to address issues in the model or on the drawings, to record comments and amendments, as well as coordination issues or errors on the drawings.

All comments entered using the 'Comments Tag' are quickly accessible in a schedule format. See Sheet: Drawing Information > Sample Schedules > SAMPLE\_Comments Register

#### 2 Enter Your Comment Here

'Comments Tag' is placed on 2D views in the model to record notes, comments + issues in the model and on drawings

### Comments Register

Project:	Revit Architecture Template	Page
Job no.	P000	Source PBN

#### Comments Raised

No.	Date	Created By	Notes	Resolved By	Resolved Date
1	00.00.0000	PBN	Enter Your Comment Here	PBN	00.00.0000
2	00.00.0000	PBN	Enter Your Comment Here	PBN	00.00.0000
3	00.00.0000	PBN	Enter Your Comment Here	PBN	00.00.0000

Comments on drawings are automatically added to the register for review



## TEMPLATE GUIDE

### ANNOTATIONS - TAGS + SYMBOLS

# 1.

In the “Legends” section of the template browser, we have populated a legend of elegant custom annotation tags, symbols, titles and dimensions. We have modified and expanded the range of tags available in the default Revit template such that there is a full set of graphic tags available to our template users to enhance the legibility of drawings. The legend provides a clean presentation of the full set of annotations contained in the template for ease of selection and use.

	Ceiling		Spot Elevation - Plan		
VALUE ? DESCRIPTION ?	Keynotes		Spot Elevation - Plan		
	Curtain Panel		Spot Elevation		Room
AP-01	Detail Type Mark		Breakline		
			Working Point	View Name	
101	Door		Step Symbol	1 View Name 1:100	View Title
	Floor Finish Type Mark		Entry Arrow	View Name 1:100	
	Floor Type		Grids		
NAME ? DESCRIPTION ?	Material		Centre Line		Level Head
	Revision				
	Stair Type				
	Window				



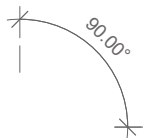
## TEMPLATE GUIDE

---

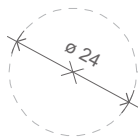
### ANNOTATIONS - DIMENSIONS

## 2.

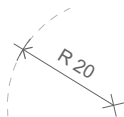
We have curated a suite of customised dimension annotations suitable for a variety of different applications. These dimensions are also presented the “Legends” section of the template browser.



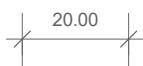
Dimension - Angular



Dimension - Diameter



Dimension - Radius



Dimension - Standard



Dimension - Standard Red



Dimension - Grid Line



Dimension - Arrow



## TEMPLATE GUIDE

---

### ANNOTATIONS - SECTIONS

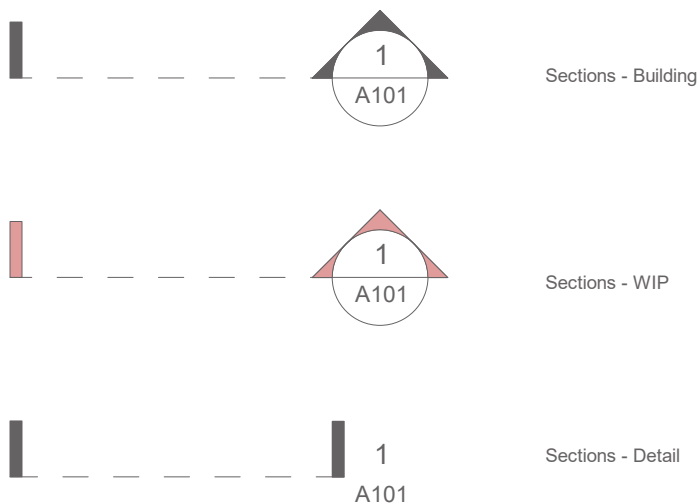
## 3.

We have modified the existing Revit default section annotations to include 3 different types as shown below. The advantage of these separate types is that they are easily identifiable and they can be filtered out of individual views where needed.

“Building” sections are for general section cuts through the building.

“WIP” sections are for working views that are not placed on sheets but needed for modeling or coordination purposes. These are easily identifiable by their colour.

“Detail” sections are for use on drawings of a smaller scale, typically detail drawings. The section head has been modified to improve the legibility of these detail drawings.





## TEMPLATE GUIDE

### VIEW TEMPLATES

View templates are key to producing beautiful graphic output from Revit. We have created a set of graphic view templates that will quickly and easily automate the graphic settings of your drawings. This will ensure consistency in the drawing graphics across the project and allow automatic updates to be applied to a set of drawings simultaneously, saving a great deal of time and effort.

We have included a set of general arrangement view templates in a variety of scales for plan, section and elevation drawings as well as 3D views. For the purpose of enabling workflows, our template also provides WIP (work in progress) view templates for the non-issued, working views. These view templates automatically turn on the visibility of reference lines and external links for coordination and modeling work.

Our view templates have been created to be easily modified, updated, duplicated, expanded or tweaked to suit individual practice or project requirements.

**View templates**

Discipline filter:  
<all>

View type filter:  
<all>

Names:

- PBN - 01 GA Plans 50 - Hatched
- PBN - 01 GA Plans 50 - Solid Fill\_Black
- PBN - 01 GA Plans 50 - Solid Fill\_Coloured
- PBN - 01 GA Plans 50 - Solid Fill\_White
- PBN - 01 GA Plans\_Site 200
- PBN - 01 GA RCP 50 - Hatched
- PBN - 01 GA RCP 50 - Solid Fill\_Black
- PBN - 01 GA RCP 50 - Solid Fill\_Hatched
- PBN - 01 GA Sections/Elevations 50 - Hatched
- PBN - 01 GA Sections/Elevations 50 - Solid Fill\_Black
- PBN - 01 GA Sections/Elevations 50\_Solid Fill\_Coloured
- PBN - 01 GA Sections/Elevations 50\_Solid Fill\_White
- PBN - 01 GA Site Plan 200
- PBN - 02 Plans Area 50
- PBN - 02 Area Plans 100
- PBN - 3D view\_Hidden Line
- PBN - 3D view\_Hidden Line\_Shadows
- PBN - 3D view\_White Surface
- PBN - WIP Plans
- PBN - WIP Sections/Elevations

General Arrangement Drawings

Area Plans

3D Views

Work in progress views

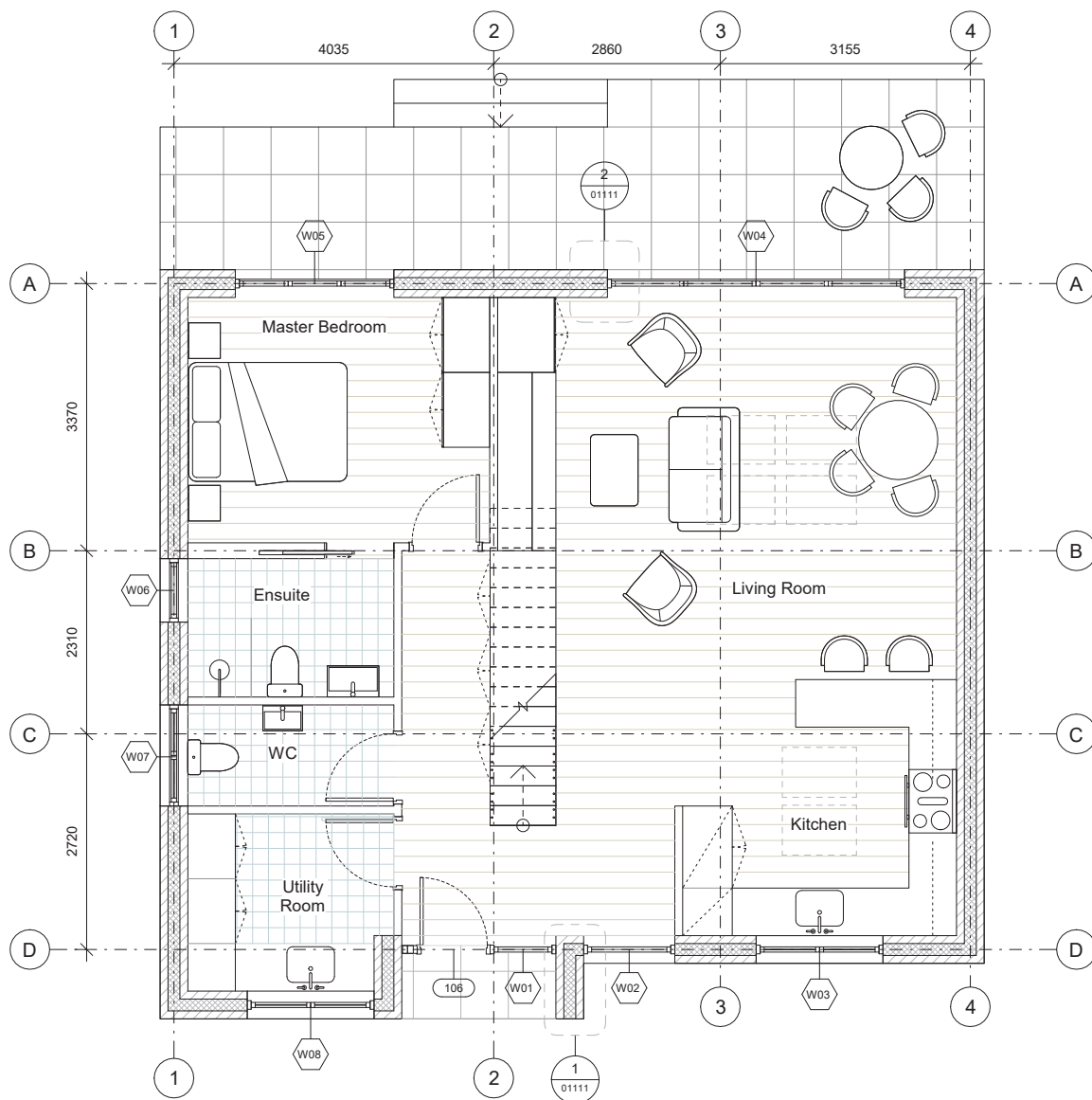




## TEMPLATE GUIDE

### VIEW TEMPLATE - HATCHED

Our *Hatched* view template is ideal for use in general arrangement drawings and has been developed to show all relevant annotations on the drawing as well as floor, wall, roof and ceiling buildup's and material hatches.



0 5M 10M 25M 50M  
SCALE: 1:50 @ A1

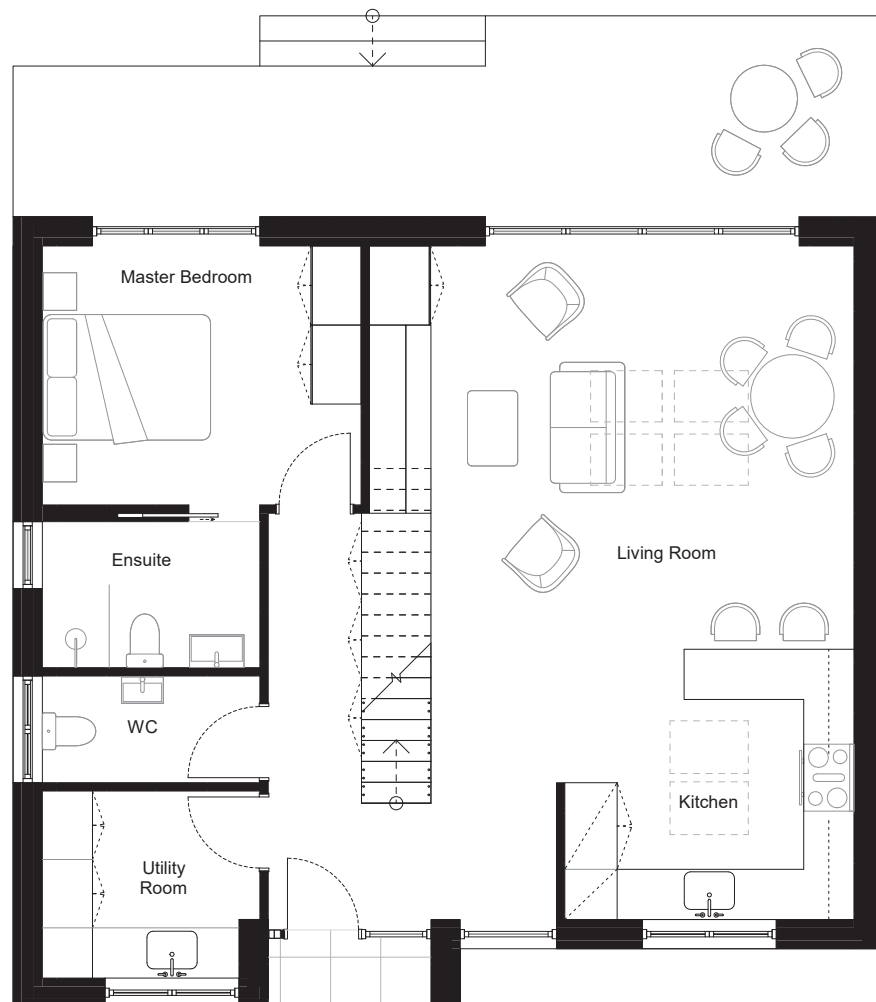
Drawing export from Project by n. Sample Revit Project



## TEMPLATE GUIDE

### VIEW TEMPLATE - SOLID BLACK

Our *SOLID BLACK* view template is ideal for use in concept or diagrammatic drawings and has been developed to show a dense solid fill for all floor, wall and roof to clearly present the plan without the need to show added detail such as component buildups and annotations.



0 5M 10M 25M 50M

SCALE: 1:50 @ A1

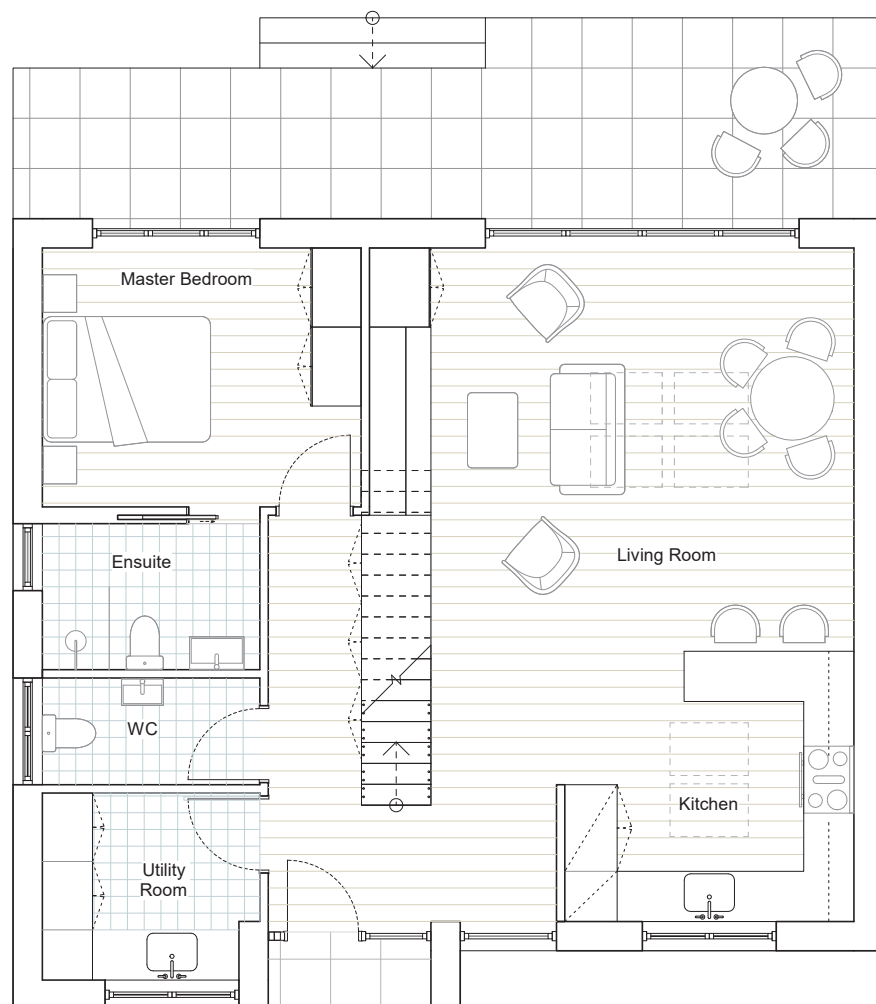
Drawing export from Project by n. Sample Revit Project



## TEMPLATE GUIDE

### VIEW TEMPLATE - SOLID WHITE

Our *SOLID WHITE* view template can be used for concept, planning or presentation drawings and has been developed to show simplified white fills for all wall, floor and roofs. The drawing are presented clearly and without the need to add detail and materials to the component buildups. The view template can be easily modified to make the annotations visible, grid, levels, sections etc for use in planning and general arrangement drawings.



0 5M 10M 25M 50M

SCALE: 1:50 @ A1

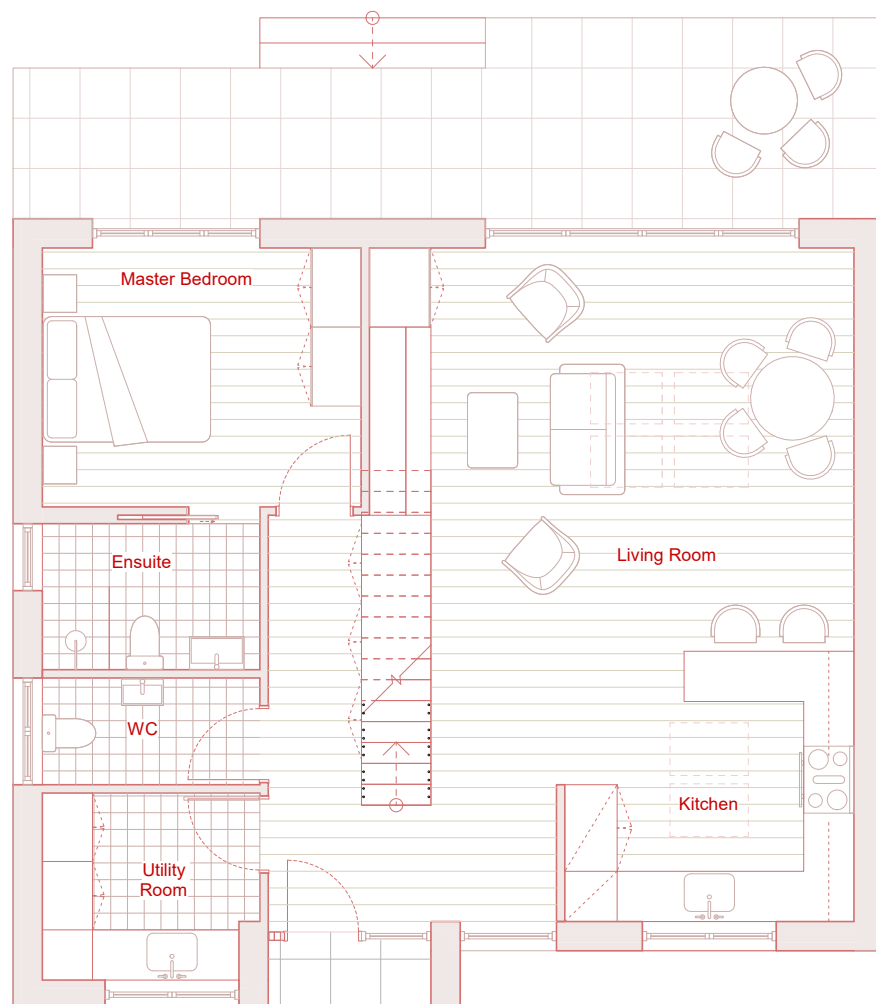
Drawing export from Project by n. Sample Revit Project



## TEMPLATE GUIDE

### VIEW TEMPLATE - SOLID COLOURED

Our *SOLID COLOURED* view template is an alternative to our white and black fill view templates which introduces conceptual colour the lines and hatches to add life to presentation drawings. The colours can be quickly modified to any colour or the view template itself can be duplicated to have multiple colour versions of this template.



0 5M 10M 25M 50M

SCALE: 1:50 @ A1

Drawing export from Project by n. Sample Revit Project



## TEMPLATE GUIDE

---

### OUR TEMPLATES + FREE TOOLS

Visit our shop at [projectbyn.com](https://projectbyn.com) for Custom Templates, Sample Revit Projects + Free Guides to add to your Revit and BIM Library. Our blog also includes helpful articles for implementing Revit in your architecture projects + practice.



Revit PRO Template



Revit LITE Template



BIM Folder Structure

FREE



Revit Titleblocks



Revit Sample Project



Revit Best Practices Guide

FREE

VISIT  
OUR SHOP



## ABOUT US

Project by n. is an architectural graphics studio specialising in the design of elegant graphic solutions for architects + design professionals. Our objective is to help architecture practices create beautiful drawings in Revit while achieving efficiencies in the production of drawing information and in the delivery projects from conception through to final realisation.

As architects ourselves, we have experience in working with architecture and design studios that share our passion for producing beautiful graphic drawing output and imagery.

Our full custom graphic Revit templates and free Revit tools are available to be purchased and downloaded from our website:

[projectbyn.com](https://projectbyn.com)

GET  
IN TOUCH

[hello@projectbyn.com](mailto:hello@projectbyn.com)